

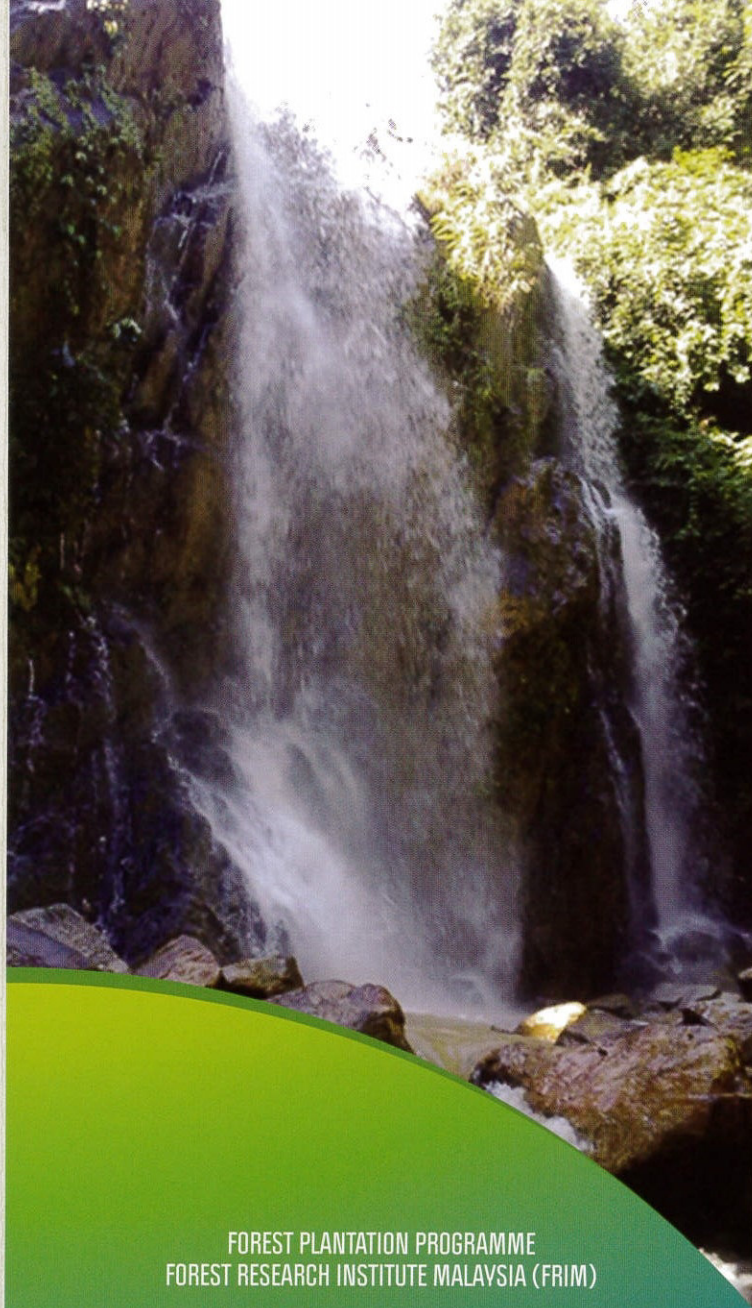


RESEARCH ACTIVITIES

- Natural buluh semantan stands
- Research into the formation and growth of mahang plantation (*Macaranga tanarius*)
- Jati plantation
- Tongkat ali plantation
- Sesenduk plantation

FACILITIES / AMNITIES

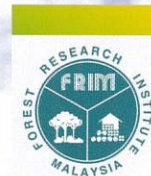
- Providing research plot for planting of forest tree species and herbs
- Education centre
- Camping and recreational activities, and forest exploration



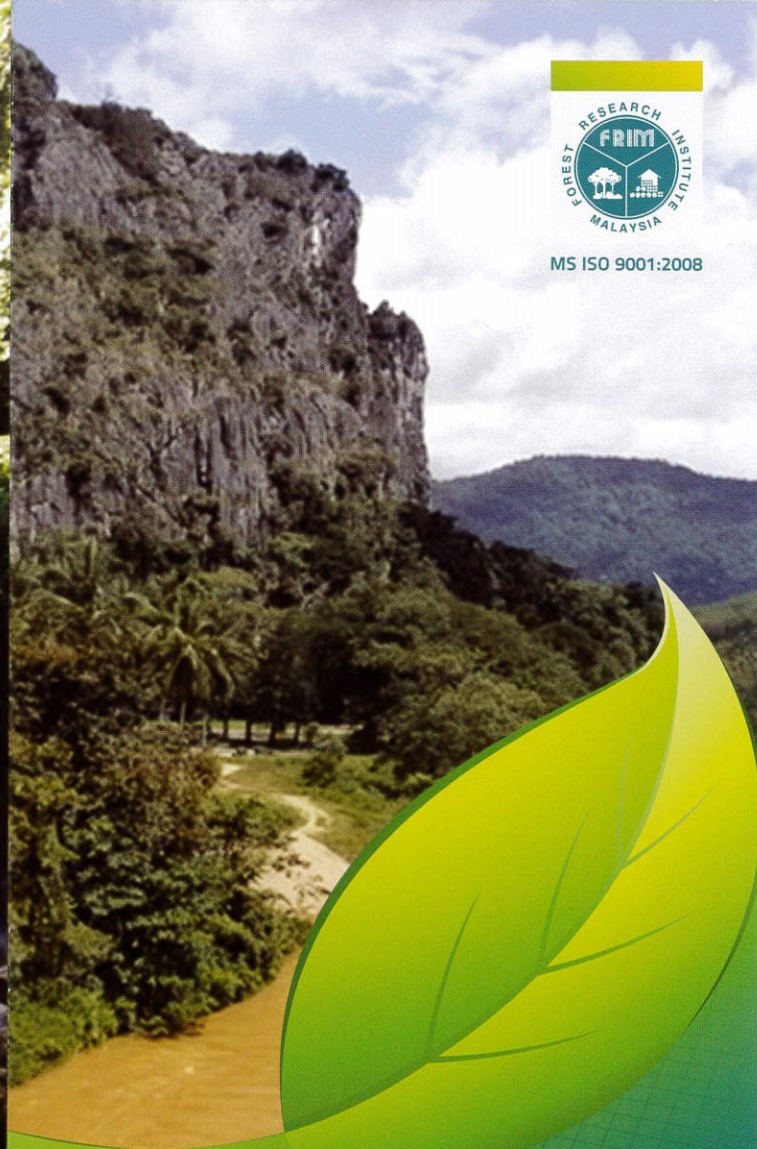
FOREST PLANTATION PROGRAMME FOREST RESEARCH INSTITUTE MALAYSIA (FRIM)

52109 Kepong, Selangor Darul Ehsan, Malaysia.
Tel: +03-6279 7093 Fax: 603 6273 1314
Web: www.frim.gov.my E-mail: emlee@frim.gov.my

Hotline: 603 6279 7000



MS ISO 9001:2008



JELI

FRIM RESEARCH STATION
Forest Plantation Programme

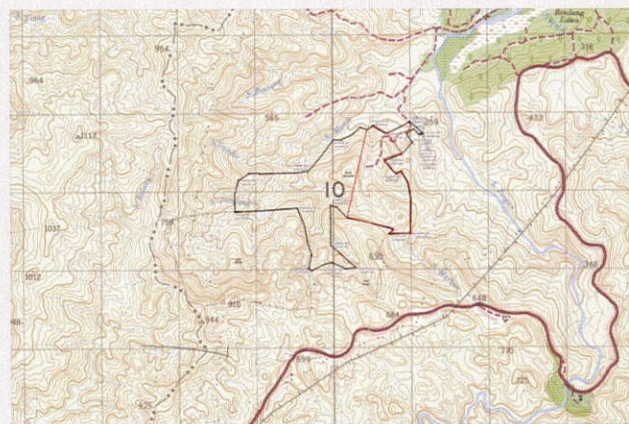


INTRODUCTION

The Jeli FRIM Research Station (SPF) which covers 200 ha of land is an area located in PT 4269 Mukim Belimbing, Daerah Batu Melintang, Jajahan Jeli, Kelantan. On August 30, 2010 the land was granted ownership status by the Kelantan State Government. Accessibility is by road about 20km from the Jeli town and approximately 95km from Kota Bharu. The coordinates are X101'41521772", Y5'39'34687346".



Its topography ranges from wavy to steep slope and the area is overgrown by natural forest stands of buluh semantan (*Gigantochloa scortechinii*). The hilly area is covered by tropical forests. A river runs across the station area with a waterfall that has the potential to attract tourists once the infrastructure and road is developed later.



OBJECTIVES

- To create a centre of excellence based on the concept of forestry with a multitude of activities for tourists, university students and researchers.
- This forestry concept will encompass wood-based and non-wood-based products like buluh semantan including the formation of stands of various forest species by utilise research especially through tissue culture development.
- The forest species identified are sesenduk (*Endospermum malaccense*) karas (*Aquilaria malaccensis*), mahang, jati & tongkat ali.
- To establish various selected herbal species plots including kacip fatimah (*Labisia* spp), tongkat ali (*Eurycoma longifolia*), various tumeric species, e.g., Ginger spp. (*Zingiber officinale*), kaffir lime (*Citrus hystrix*) and other herbal species.

