

**KAJIAN UJITANAM KLON / SPESIES  
LADANG HUTAN BERPOTENSI**

Spesies : *Eucalyptus deglupta*  
Tarikh Tanam : 14 Januari 2013  
Jarak Tanam : Teknik 'Nelder 1983'

*Eucalyptus pellita*



MS493 9001:2008

## CONTACTS

Dasrul Iskandar Darus (Coordinator)  
E-mail: [dasrul@frim.gov.my](mailto:dasrul@frim.gov.my)  
Tel: 6012 6858 986 / 603 6379 7742



### FOREST PLANTATION PROGRAMME FOREST RESEARCH INSTITUTE MALAYSIA (FRIM)

52109 Kepong, Selangor Darul Ehsan, Malaysia.  
Tel: 603 6379 7742 Fax: 603 6280 4614  
Web: [www.frim.gov.my](http://www.frim.gov.my) E-mail: [dasrul@frim.gov.my](mailto:dasrul@frim.gov.my)

HotLine: 603 6279 7000

# SELANDAR

**FRIM RESEARCH STATION**  
*Forest Plantation Programme*



## INTRODUCTION

The 30-ha FRIM Research Station (SPF) in Selandar was established to create a centre of excellence based on a multiple concepts of forestry. The concept includes forestry as a tourist attraction, testing ground of selected forest species (clones), forest farming and investment in forest plantation. The field activities include the establishment of existing forestry stands and testing of potential clones with selected forest plantations species such as *Eucalyptus deglupta*, eucalyptus hybrid, jelutung, sesenduk and batai issued by FRIM tissue culture laboratory. Other potential forest species include *Santalum album* and *Eucalyptus pellita*, which will be test-planted in 2016.



*Eucalyptus deglupta*

## INFO

District: Jasin, Melaka.

Sub-district: Selandar

Location: Compartment 5B Bukit Sedanan FR

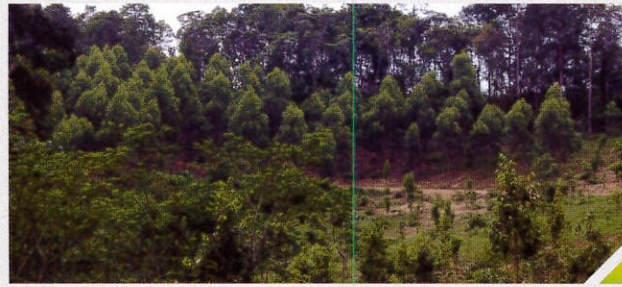
Theme: FRIM Clones Development Centre and the Centre for Plant Species Test Plantation

Founded: May 27, 2009

Coordinates: Latitude 2 ° 19 '0 N, Longitude 102 ° 25' 60 E



Office



## OBJECTIVES

- To examine the growth potential of selected clones for future forest plantations
- To disseminate and sharing information on forest plantations
- To be a centre of knowledge on forest plantation resources and potential species



## RESEARCH ACTIVITIES

- Development and field testing of tissue cultured plantlets
- Research plot on Common Garden of *Shorea leprosula* species.
- Research on information and growth of *Macaranga* species in forest sites
- Germplasm and experimental plots of *Aquilaria*.